



MISSION FRONTIERS



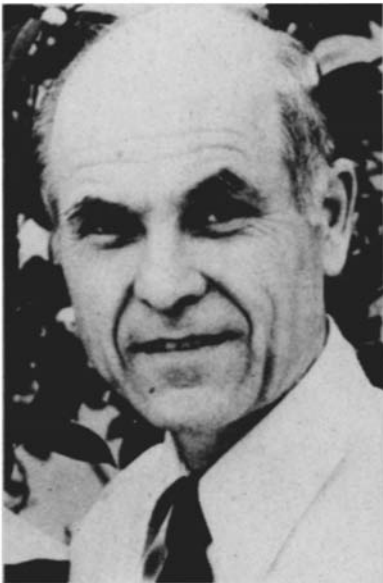
1896~1982

William Cameron Townsend, founder of the largest descriptive linguistic effort in the world, died of leukemia Friday evening, April 23 in a Lancaster, South Carolina hospital. He was born on July 9, 1896.

Townsend provided the stimulus for the most widespread study of unwritten minority languages ever attempted. He was founder of Wycliffe Bible Translators (WBT) and its academic affiliate, the Summer Institute of Linguistics (SIL), as well as its technical affiliate, Jungle Aviation and Radio Service (JAARS).

page 8

CAMERON TOWNSEND
 Founder of Wycliffe Bible Translators



FROM THE DIRECTOR:

May 10, 1982

Dear friends,

Do these editorials "scream" at you? Apparently each issue of this bulletin does appear to "scream for money"--a good friend of mine says...like nothing else he gets through the mail.

I am embarrassed. I can't believe it! Yet he is being honest with me. What are we screaming about?

Well, we are pleading with people to share the vision of the final frontiers, yes! (Thousands are!)

We are pleading with organizations to join us in this cause, yes. (Dozens are.)

Yes, we invite people to invite others to give a \$15.95 "founding gift." And 28,000 have done so thus far. (Note 33,900 new people are the goal of the organizations just mentioned. That's more than we have on our own encountered in 5 years!)

We have also invited all groups and organizations (that want to do something to help us) to join the Frontier Fellowship movement and to give us the first \$15.00 from any one person who sends their loose change to them. A number have already said yes. (See page 20.)

Is this what has "screamed" at my friend? No, I guess it is something else. I'm sure it has to do with the complete picture on pages 6 and 7.

Those facts! They scream at us too. Looking at those 16 payments we have already made--it is terribly impressive what God has done! We don't believe he wants us to quit. Yet going on is hard.

Dear people, things look so good and yet so bad. The good part is what God has already done. There is only a thin line between an anxiety which is faithless, and a concern which is faithful. But, tell me, if we studiously avoid giving any evidence of a normal human reaction to the precariousness of our situation, may we not actually be sending false signals by our silence?

So let me speak from a human standpoint. Our worst threat of foreclosure was last Dec. 31st. Many people sent over and above gifts, and we skinned by. Then came 4 months of "relaxation," I guess. Practically no money came in. We couldn't pay our March 1st payment until April 1st, and even then we had to borrow \$65,000 out of a \$70,000 severance fund--our only contingency resources. As I write, (May 10th) we have not paid that back yet and we have nothing toward the \$175,000 due June 1st. (See chart on p. 7.)

We would have to be pretty faithless not to believe that God knows what He is doing in giving us grave difficulties in meeting these payments. We would also have to be foolish to fail to see that this pressure, that this stress, is a maturing process which He apparently feels we need. He is not simply trying to buy this campus for the final frontiers. He's trying to forge a disciplined community devoted to Him, to each other, and to the frontiers.

Would you like to join us?

Yours faithfully in His commission,

Ralph D. Winter
Ralph D. Winter

P.S.

A personal note: By curious coincidence it was the very day Cam Townsend died (although I did not know it at that moment) that another missionary octogenarian, Donald A. McGavran, was sitting in my office discussing with me the disposition of some of his books. I told him we would be very willing to take care of his books, and to do so in such a way that not only would those books survive, but that if possible we would like to see those distinctive McGavran concerns preserved and live on. I told him that we want to commit ourselves to assist him in every way possible while he still lives.

Of course, we can only attempt to do this. We cannot guarantee anything that exceeds our physical, intellectual and spiritual limitations.

But one of his desires is to seek out other older veterans of the mission cause and to encourage them into fruitful communication and interchange. We expect to help him do that. (Can you help us get in touch with such people?)

Some of those dear people are already gone. Townsend left behind 4,000 dedicated younger people to pursue his vision for the tribal Hidden Peoples of the world. Are there 4,000 younger people who will ally themselves to McGavran's Hidden Peoples? Can there be effective efforts linking these generations?

My father is the same age as Townsend and McGavran. A retired engineer, he works here all day on Thursdays, gives generously to this work, and prays for us every day. His efforts are part of the 230 years of time our staff have by now invested in this modestly massive new base. Are there others who would like to join the effort here? Old or young? We are, we intend to be, an inter-generational community. It is a thrilling thing trying to keep up with the Townsends and McGavrans!

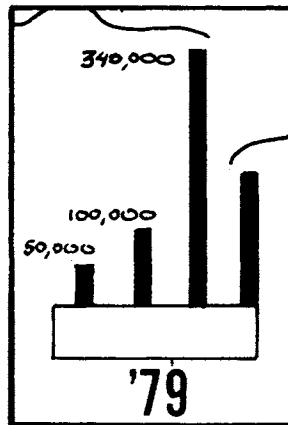
RD.W.

MISSION FRONTIERS

The News Bulletin of the U.S. Center for World Mission

June 1982 4:4

CONTENTS



People often ask about the status of our campus purchase. Once again we are presenting a status report on the entire project.

Editorial	2
With the U.S. Center for World Mission	4
Cameron Townsend	8
With the Students	10
With the Schools	12
With the Agencies	14
With the Churches	16
With the Frontier Fellowship	21
Special Items	22



MISSION FRONTIERS is the publication of the United States Center for World Mission, 1605 Elizabeth Street, Pasadena, CA 91104. (213) 797-1111. Ralph D. Winter/General Director; Steve Ray/Editor; Gene Keller/Graphics. Reprint requests must be in writing. Published about ten times a year. Subscriptions, \$3 per year. Copyright 1982.



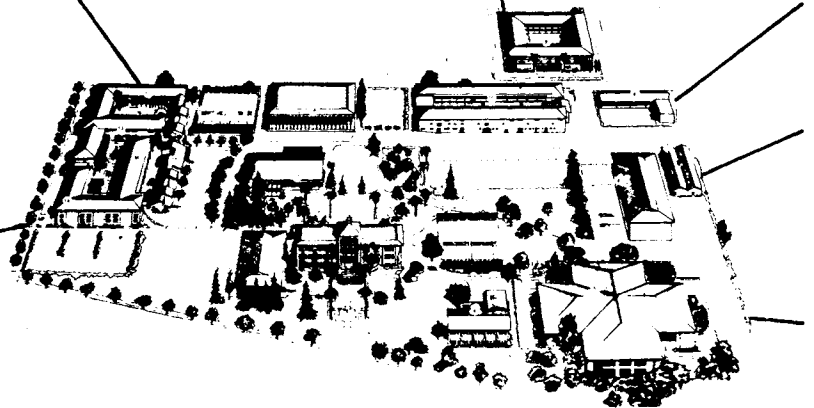


With the U.S. Center for

PHYSICALLY: It is 100 buildings on 35 acres about equally divided between 85 residential properties and a campus (cafeteria, auditorium, library, dormitories, classroom buildings, administration buildings). Located in northeast Pasadena, it is on the former campus of the Pasadena (Nazarene) College.

FUNCTIONALLY: Our task is primarily to serve U.S. evangelicals as a center for 1) strategy and 2) mobilization, focused on the final frontiers of world mission. By "frontiers" we refer to roughly 16,750 unreached "people groups" that are as yet without a strong, indigenous church movement. These may be urban or rural, in the U.S. or abroad. By "strategy" we mean field strategy, that is, what are these people groups we yet need to reach with the Gospel, and how can they be reached? By "mobilization" we mean stirring up to frontier awareness the Christian resources within this country — the different strata of evangelicals within denominations and independent churches. We also maintain contact with a growing network of 25 other offices worldwide that are similarly concerned about pushing on into these "people group" frontiers.

ORGANIZATIONALLY: Even though we are set up to serve mission agencies, we are ourselves a mission agency, affiliated with the Interdenominational Foreign Mission Association. Like almost all other mission agencies, we make no distinctions of pay other than those based upon differences of need. Our director receives no more than the newest member of our staff. We are a community which seeks to minister one to another. We encourage work-study combinations rather than all-work or all-study cycles for an extended period of time. Partly for this reason, we operate our own university, the William Carey International University.



ENTER, THE LITTLE MAN FROM BURMA

In the spring of 1981 God, through a tribal pastor, gave us the Frontier Fellowship program. Our goal now is 400,000 people by September 1983, a million by December 1984. Many organizations who want to see this project succeed are now cooperating. As they give us \$15 out of the first \$100 any one individual gives we will be able to pay our largest single payment (\$6,000,000 in September 1983).

In addition the cooperating organizations will receive \$34,000,000 for their own work! The \$6 million and the \$34 million (total \$40 million) is the very minimum expected from 400,000

people praying and saving loose change daily for a year. Cooperating congregations, denominations, agencies, schools are encouraged (not required) to give us the first \$15 coming in from any one person they enlist. The \$6 million we need comes from that source (400,000 x \$15 = \$6 million).

We will instantly agree with you that this is not likely to be the easiest way to pay off this property! But we think you will agree that the value of this goal is monumental.

Just think for a moment about the result of the daily reading of the Frontier Fellowship prayer guide by 400,000 people. The new vision, let alone the new money produced could be the

World Mission • USCWM • USCWM

FINANCIALLY: We have always operated on a "self-sustaining" basis, but we do need to pay for the property. Our policy beyond our first year of existence has been to seek a million one-time-only \$15.95 gifts as a means to found this Center. What we now own is worth close to \$20 million, while we still owe about \$10 million. Our net worth is thus at least \$9 million, up from a net worth of less than \$100 in January of 1977.

OPERATIONALLY: You won't believe it, but this is a cooperative center where over 40 mission agencies send people to work! It is the largest single piece of property ever to be set aside as a nerve center for the cause of missions in this country. Yet, this is only a single point in the worldwide network just mentioned. We are now developing regional offices in this country, too.

SOCIALLY: We are over 200 full-time people working here daily, two-thirds of whom are in member organizations. Our central staff has grown to nearly 80 people today. Because of the predominance of youthful staff, we are part of the spearhead of new youthful leadership in the world of mission agencies today and tomorrow. Close to 50 of our former staff are now overseas.

You may wonder about our strange and scary "one-time small gift" approach ... here are the fascinating reasons:

1. Knowing that we will never ask people for a second gift, more churches will cooperate. The cooperation of local congregations is essential if we are to help awaken 1,000,000 Christians in the United States to these frontier people groups.
2. Meanwhile, the more churches that cooperate, the more people who will gain a vision of the final frontiers and begin to give (through their normal channels) new and additional money for frontier mission activities.
3. Furthermore (this was our original reason) with this policy, mission agencies do not sense competition, but reinforcement. We are not winning away their steady supporters, but encouraging them and adding thousands of new ones. The effect is an urgently necessary "broadening of the base" of mission awareness and giving in the U.S.
4. Our approach does not employ fund raisers or direct mail methods, but almost entirely relies upon the amazing and wonderful grapevine of personal recommendations from pastor-to-pastor, from people-to-people. This is the method by which the Gospel has spread since the first century. There is no more economical means.

beginning of turning our nation around. Yes, our survival as a nation hangs on our obedience to the Great Commission!

Similarly, we believe our survival as a Center depends upon our faithfulness to the vision God has given us. We have two verses which we feel can be specifically rephrased for our case: Matthew 6:33, "Seek ye first the fulfillment of the Great Commission, and all these small gifts will be added unto you." Also Mark 8:35, "If you wish merely to save the campus you'll lose it, but if you are willing to lose it as you seek to give frontier vision to others, you'll save it."

Dear friend of the USCWM, follower of Jesus Christ, even if you don't at first see how we could

have arrived at these conclusions, you can begin to help us reach out to these 400,000 people.

How? That's 8,000 congregations with 50 Frontier prayer partners in each one. How about your church, to begin with? Every individual you reach with new vision will give a little to us and much more to his church or mission. Please seek to help others begin to use the Frontier Fellowship Daily Prayer Guide. Partly because our property depends on it. But mainly because this is for the Lord, and for those thousands of mission beachheads that have not been made — and for those precious creatures of God who still sit in darkness while we have the light.

USCWM • USCWM • USCWM

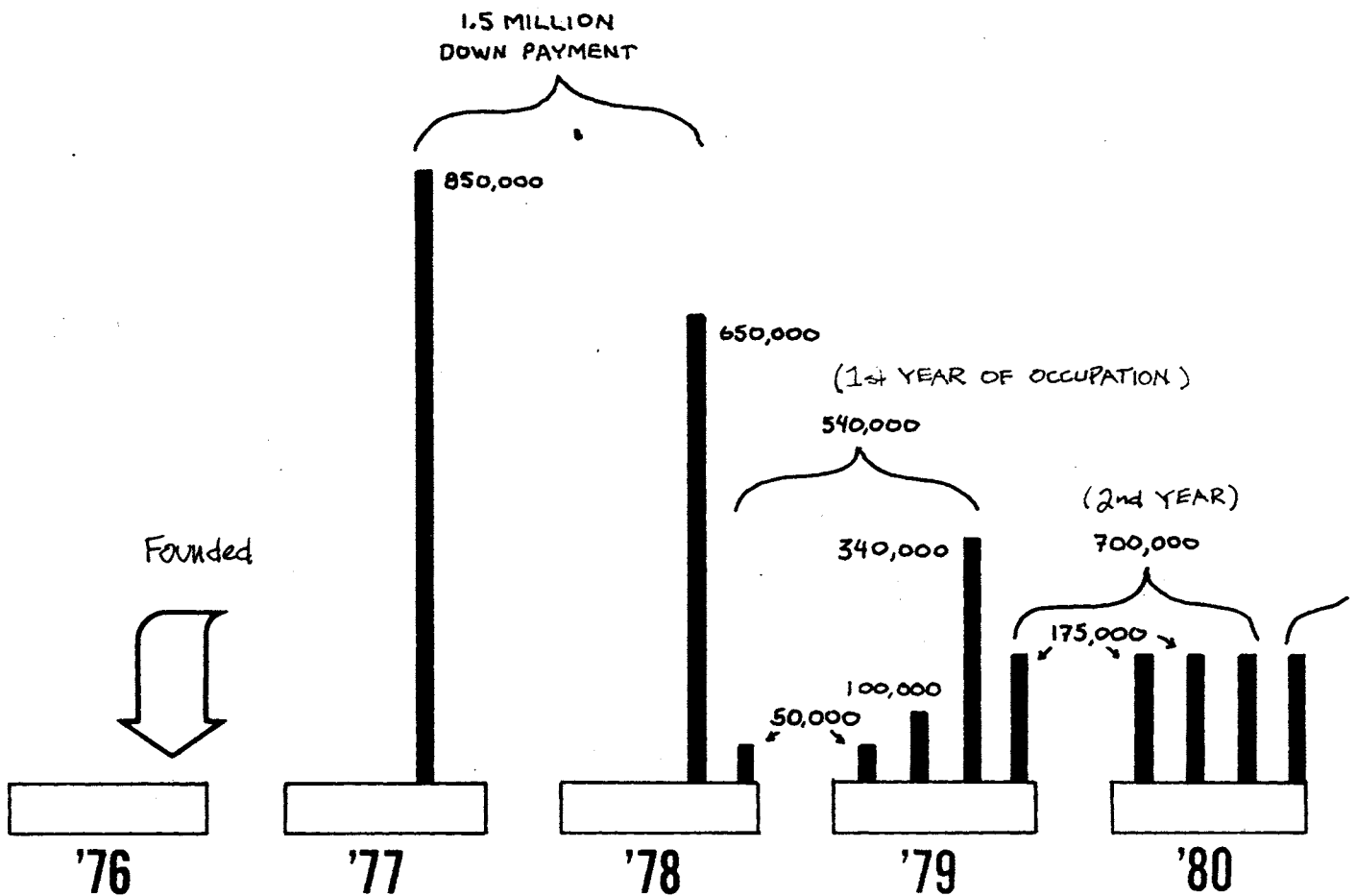
REPORT ON OUR STEWARDSHIP:

You and others have given us roughly \$4 million which we have paid toward this campus. We must thank you — and the Lord — for this.

About half that, or \$2 million, has gone to reduce the balance owed — from \$8.5 million to \$6.5 million. The other \$2 million has gone for interest on the unpaid balance. During this time, the value of the campus alone has

increased by something like \$4 million to \$6 million. It is now worth at least \$12 to \$16 million. The value of the housing ("second half of the campus") has also increased by over \$2 million. (See the financial summary on page 4.)

You may wonder, however: If we have been sorely tested by the "small" \$175,000 quarterly payments, how can we hope to contend with that \$6 million "balloon" payment next year? The answer we long sought from the Lord we

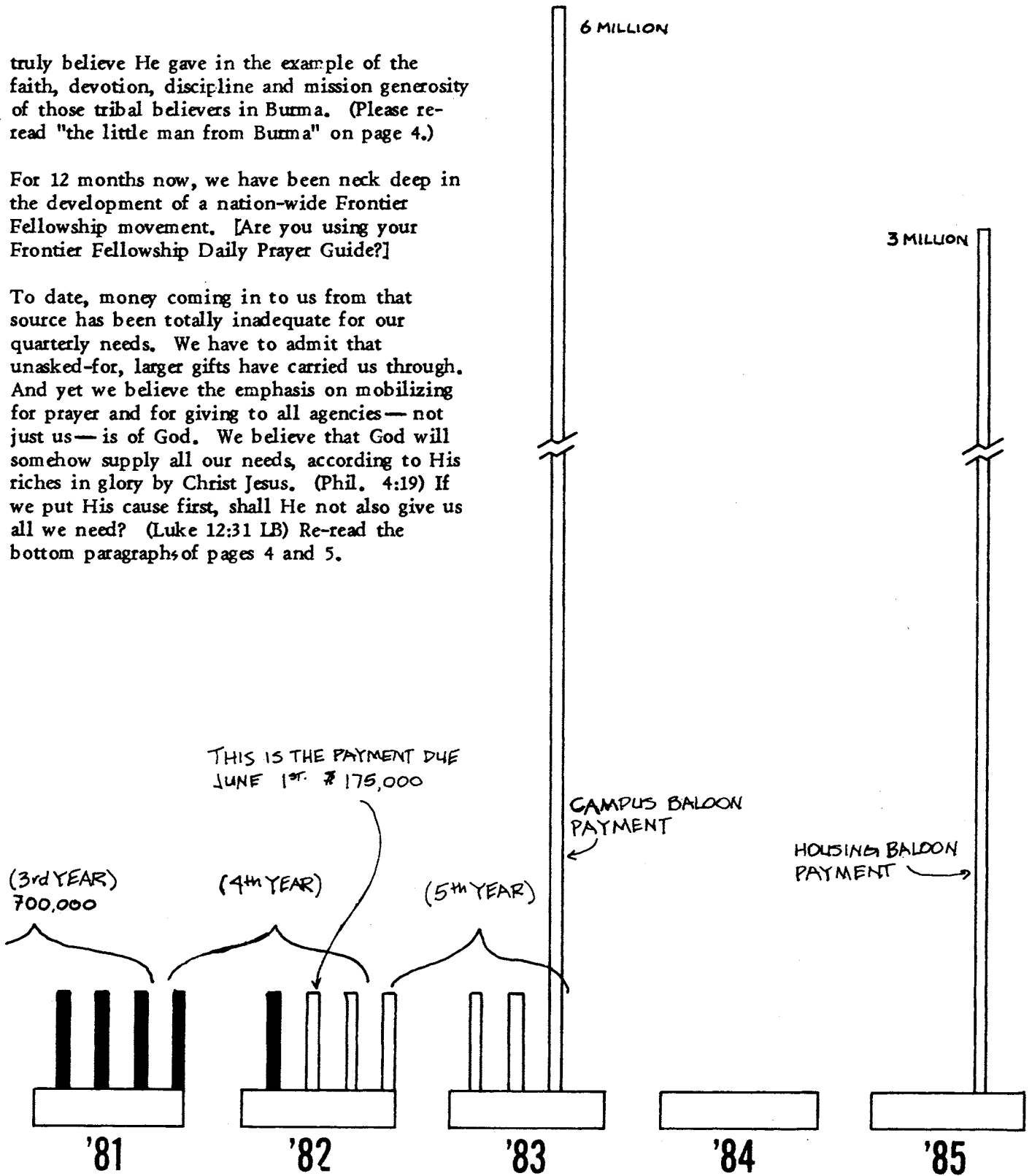


USCWM • USCWM • USCWM

truly believe He gave in the example of the faith, devotion, discipline and mission generosity of those tribal believers in Burma. (Please re-read "the little man from Burma" on page 4.)

For 12 months now, we have been neck deep in the development of a nation-wide Frontier Fellowship movement. [Are you using your Frontier Fellowship Daily Prayer Guide?]

To date, money coming in to us from that source has been totally inadequate for our quarterly needs. We have to admit that unasked-for, larger gifts have carried us through. And yet we believe the emphasis on mobilizing for prayer and for giving to all agencies — not just us — is of God. We believe that God will somehow supply all our needs, according to His riches in glory by Christ Jesus. (Phil. 4:19) If we put His cause first, shall He not also give us all we need? (Luke 12:31 LB) Re-read the bottom paragraphs of pages 4 and 5.



“If Your God Is So Smart, Why Can't He Speak My Language?”

Townsend is known worldwide for his tremendous efforts in getting portions of the Bible translated in hundreds of languages around the world. He concentrated on forgotten people, isolated by geography, culture and language. He believed every person should be able to read of God's love in his mother tongue — the “language that speaks to the heart.”

Dr. Kenneth L. Pike, internationally-known linguist and former chairman of the Department of Linguistics at the University of Michigan, said: “not since the third century has there been a man like Cameron Townsend, who attempted so much and saw so many dreams realized in his own lifetime.”

Townsend is remembered for his

single-mindedness for Bible translation. Evangelist Billy Graham admits that more than once Townsend tried to convince him to become a Bible translator. In turn, Graham tried to interest Townsend in his crusades, but “all Townsend wanted to talk about was Bible translation.”

“He's touched the world in a way I never could,” Graham told a large audience in May 1981 at a California convention center where they had gathered to pay tribute to Townsend and his efforts in Bible translation over the last 50 years. Within his lifetime, Townsend has seen 4,500 people of 34 different nationalities catch his vision for Bible translation. Townsend spent 10 years translating the New Testament for a

Guatemalan Indian language in the 20's. Now nearly 160 New Testaments have been finished in other Latin American countries, North America, Africa, Asia and the Pacific. Translation and language study is progressing in 750 other languages that had never been written before.

Ralph Winter of the U.S. Center for World Mission in Pasadena, California places Townsend among the great missionary pioneers. “If, in our lifetime, there is anyone comparable to William Carey and Hudson Taylor, I believe it is Cameron Townsend. He saw that there were still unreached frontiers, and for almost half a century, he waved the flag for overlooked tribal peoples of the world.

"Together with his counterpart in India, Donald A. McGavran, who simultaneously was to highlight social or caste structure both in India and other places as barriers walling off people groups from the Gospel, Townsend has had massive, unparalleled impact in awakening modern Americans to the unfinished task. Both Townsend and McGavran embraced unreservedly the challenge of the remaining peoples or Biblical nations

(whether tribal or other) that are yet to receive the blessing of the Word and a witness *within* their societies. Townsend and McGavran (born a year later) are thus the early prophets of what only now is beginning to burgeon—the final movement to the last frontiers."

Townsend was born on a farm near Downey, California, on July 9, 1916. At 21 he thought he'd have to serve in World War I, but instead he ended up selling Spanish Bibles in Guatemala. But since 60 per cent of the population was Indian, his Bibles meant nothing to them.

One day one of the Indians confronted him, wanting to know why Townsend's God didn't speak his language. Townsend took the question seriously, and in 1919 settled in an Indian town. Rather than spending time reaching Indians to speak Spanish, he concentrated on studying their unwritten language—Cakchiquel.

By 1929, when he was 33, he had translated the New Testament, mounted literacy campaigns, founded five schools for bilingual instruction, started a small clinic, a small printshop and a Bible institute.

He also developed a special technique for teaching people to read, called the psycho-motor method that is still in use today. This method gives the student confidence in his ability to become a reader even before he has mastered the entire alphabet. Only a few letters are introduced in each lesson.

Tuberculosis forced Townsend home to Los Angeles for a year's rest in 1932. But his awareness of the needs of Indians broadened, especially when his friend, L.L. Legters (who later helped Townsend found Wycliffe Bible Translators), brought back photographs of tribes

he had visited in Brazilian jungles.

Townsend started thinking about pioneering again, even though he was nearly 40 years old. Maybe he could go to the Amazon this time.

After a trip with Legters to Mexico, the men were convinced there were too many languages to tackle alone. They launched a summer course in linguistics to train young people for translation work. That first summer in 1934 brought two students to the abandoned farmhouse in Sulphur Springs, Arkansas.

Called "Camp Wycliffe," it later became known on the campus of the University of Oklahoma as the *Summer Institute of Linguistics* (SIL). (Today SIL's international headquarters is located in Dallas.) SIL courses are taught at 4 state universities, as well as in Germany, England, Japan, and Australia.

In 1935 Townsend took a small group of young people with basic linguistic training down to Mexico. Today members work in about 30 different countries throughout the world.

In 1942 he and three close colleagues founded Wycliffe Bible Translators to help people learn how they could support the field work or get involved themselves. WBT headquarters is located in Huntington Beach, California.

In 1962 he founded a technical department to serve Wycliffe's translators with aviation, radio and computers. Jungle Aviation and Radio Service (JAARS) has its international headquarters in Waxhaw, NC where Townsend made his home. Townsend had first dreamed of using planes in the late 1920's.

Townsend always encouraged his translators to keep on pioneering where others had never gone, following the Apostle Paul's example of giving the Good News "where Christ had never been named before."

From the very start he worked closely with officials in host governments. He always thought of himself as a guest in their countries, and tried to cooperate with them. Service held a high priority for him—no matter whether an individual had low or high political stature, was rich or poor, friend or

foe. "We must follow our Master's example and serve everyone."

This same man who had struggled through language analysis years earlier insisted the linguists follow a highly scientific approach in studying languages. "We're linguists. Our work had to be scientifically accurate. If we translate the Word of God, we have to use good grammar."

Townsend's driving force was to give people the Bible in their mother tongue. He cautioned against all ecclesiastical and sectarian activities. He didn't see that as the role of his organization.

Everything Townsend did was based upon his unfaltering faith in God. "We've got to trust God for the impossible." Many of his friends said he never took "no" as a negative, although sometimes it took 20, 30, even 40 years for his dreams to become reality.

Townsend stepped down as general director in 1969, freeing himself to try to begin work in new lands. One of his deep concerns had been the many minority groups in the USSR which didn't have Scriptures in their own languages. He and his wife, Elaine, have made 11 extended visits to the USSR.

In 1981 Peru's President Fernando Belaunde Terry acknowledged SIL's contribution in his country by giving Townsend Peru's highest decoration to foreigners. Townsend had begun work in the Peruvian jungles in 1946 with 25 young people. SIL's work there had extended to 45 indigenous languages in the last 35 years.

It wasn't the first time Townsend had been honored as founder of SIL. Previously he had received nine other decorations, from Brazil, Ecuador, Mexico, Guatemala, Peru, and the Philippines.

In 1958 he was named "spiritual conqueror of the jungle" by Ecuador. In 1972 the Seventh Inter-American Indian Congress called him "benefactor of the linguistically isolated populations on the Americas."

Townsend is survived by his wife, Elaine Mielke Townsend; four children, Grace Goreth, Joy Tuggy, Elaine Grippa, and Bill Townsend; and 12 grandchildren.



With the Students

STUDENT TIME BOMB?

Anyone watching the signs of the times and trying to see things from God's point of view will have to rate very highly the sudden emergence of the jawbreaker NATIONAL STUDENT MISSIONS COALITION (NSMC). About the time you receive this, they will be meeting at the Billy Graham Center in Wheaton, Illinois—May 24-26. Their executive met earlier, but this is the first major meeting since their origin less than 5 months ago in a 70-student "consultation" just after the Urbana meeting. Could students you know want to attend this? Phone Cindy Smith 215/352-2003 for information. Also see feature story in March/April Mission Frontiers.

Now booming into view is a 606-page NSMC book, Rebuilding the Mission Movement. This book contains the nine Task Force Reports from the January founding meeting, plus 250 pages of great student-mission ideas, as well as a 300-page, brand new account of the rise and fall of the Student Volunteer Movement—the most powerful single contribution to the spread of the Gospel in human history. (A few copies may still be available at \$8.00 postpaid. Circle the item on back cover.)

The Billy Graham Center has taken note. The NSMC will soon establish offices both at the U.S. Center for World Mission in Pasadena and at the Billy Graham Center at Wheaton College.

Other possible offices are Philadelphia, Boston and South

Carolina. (Write for an NSMC brochure that challenges young people to a five-fold commitment. Circle item on back cover.)

Theological Students for Frontier Missions (TSEM) will gather May 28-31 for their second annual meeting, a crucial event two years after the Edinburgh conference where their nucleus first banded together. Pray for them, as some are struggling between going to the field or staying awhile to help others also get there. This meeting is at Trinity Evangelical Divinity School in Deerfield, Illinois. (For more information, contact Ward Shope, 398 Berkshire Valley Road, Wharton, NJ 67885.)

Students are greatly benefited by 87 key documents brought together in one 864-page book, Perspectives on the World Christian Movement. The need

for a foundational course on missions seems always to fall between the cracks of the existing courses in contemporary schools—history, psychology, English, theology, Bible, hermeneutics—you name it! Mission-minded students have had to scrounge in many directions. David Bryant's excellent introductory book, In the Gap is forced to refer to over 50 other documents. Students get bewildered. Now one book organizes the work of 70 different authors under one cover, with exciting results.

What happens when students study these materials? In 1980, a group of students at Penn State studying this course were impressed with the need to be involved in reaching the unreached, as well as with their responsibility to share this vision with other students. The result was the formation of an



Students • Students • Students

accountability structure to help students capture and carry their vision and commitments to Christ's global cause to their fellow students. They developed "The Caleb Declaration" as a means of identifying and unifying students who are committed to obeying the Great Commission of Matthew 28:18-20.

Some of the campuses already involved in the Caleb Project are: Virginia Tech, Penn State, Kansas State, Ohio State, University of Minnesota, Indiana State, and Mississippi State. Altogether 21 are in some way involved.

For more information about how to get the Caleb Project moving on your campus, write to: The Caleb Project, 1605 Elizabeth Street, Pasadena, CA 91104 or call 213/794-1532.

U.S. EMBASSY VS. MISSIONS. Over a hundred mission minded Korean students are waiting desperately to hear whether the U.S. Embassy in Seoul, Korea will allow them to come to the U.S. Center for a month of special English studies and in particular, mission studies. After a great deal of red tape the Korean government has agreed to let them go, but will the

U.S. government let them come? All of the special immigration and naturalization service forms have been filled out. Everything is simply waiting for red tape to be cut. Do pray that it can.

Students to the rescue! When you want to get something new started, ask the students for help. It isn't easy to start the Frontier Fellowship campaign. Its momentous goal to reach over half the world's population who are still pocketed in frontier groups, its most difficult point is its reliance upon the development of a new daily habit. For older people, that is forbiddingly difficult. For students it's not so bad.

At least 30 students are already involved in "Project Frontiers" at Gordon Conwell Theological Seminary.

They are taking packets of information on the Frontier Fellowship campaign to area pastors, home church pastors, and other church contacts. So far 100 packets have been (or are being) personally shared with these pastors by the students. (Responses will go to the "GCTS Frontier Fellowship.") Their goal is to involve 100 churches in the Frontier Fellowship through this means. Alumni and alumni churches are also interested. Can you believe a hundred churches will generate half a million dollars per year for frontier missions and will harness the prayers of 5,000 people! At least three other schools are pursuing a similar plan.

LAST CHANCE to enroll in this summer's Institute of International Studies. Using the above book as a text, these two identical one-month crash courses (June 14-July 16, and August 2-August 27) spark with inputs from a whole series of lectures from outstanding mission leaders, executives and scholars. The course is designed for people who want to know more about missions, whether or not they ever serve overseas. Here is an advance, partial list of professors:

John Bennett, M.A., Executive director of the Association of Church Mission Committees (ACMC).

David Bryant Missions specialist with InterVarsity Christian Fellowship, author of *In the Gap*.

Ralph Covell, Ph.D., Academic Dean and professor of Missions at Denver Conservative Baptist Seminary, and missionary with the Conservative Baptist Foreign Mission Society.

Phil Eldons, M.A., President of Missions Training and Resource Center, part of a missionary team to Zambia, Africa.

Donald McGavran, Ph.D., Founding Dean of the School of World Mission at Fuller Theological Seminary, missionary with United Christian Missionary Society for 30 years in India.

George Patterson, Ph.D., expert in church extension principles; missionary with Conservative Baptist Home Mission Society in Honduras.

Don Richardson, Director of the Institute of Tribal Studies at the U.S. Center for World Mission, author of *Peace Child*, and *Eternity in Their Hearts*; missionary with Regions Beyond Missionary Union in Irian Jaya.

Ruth Siemens, Founder of Overseas Counseling Service, missionary with the International Fellowship of Evangelical Students (IFES) to students in Latin America.

Ralph Winter, Ph.D., Founder and General Director of the U.S. Center for World Mission; missionary with the Evangelical Presbyterian Church of Guatemala.

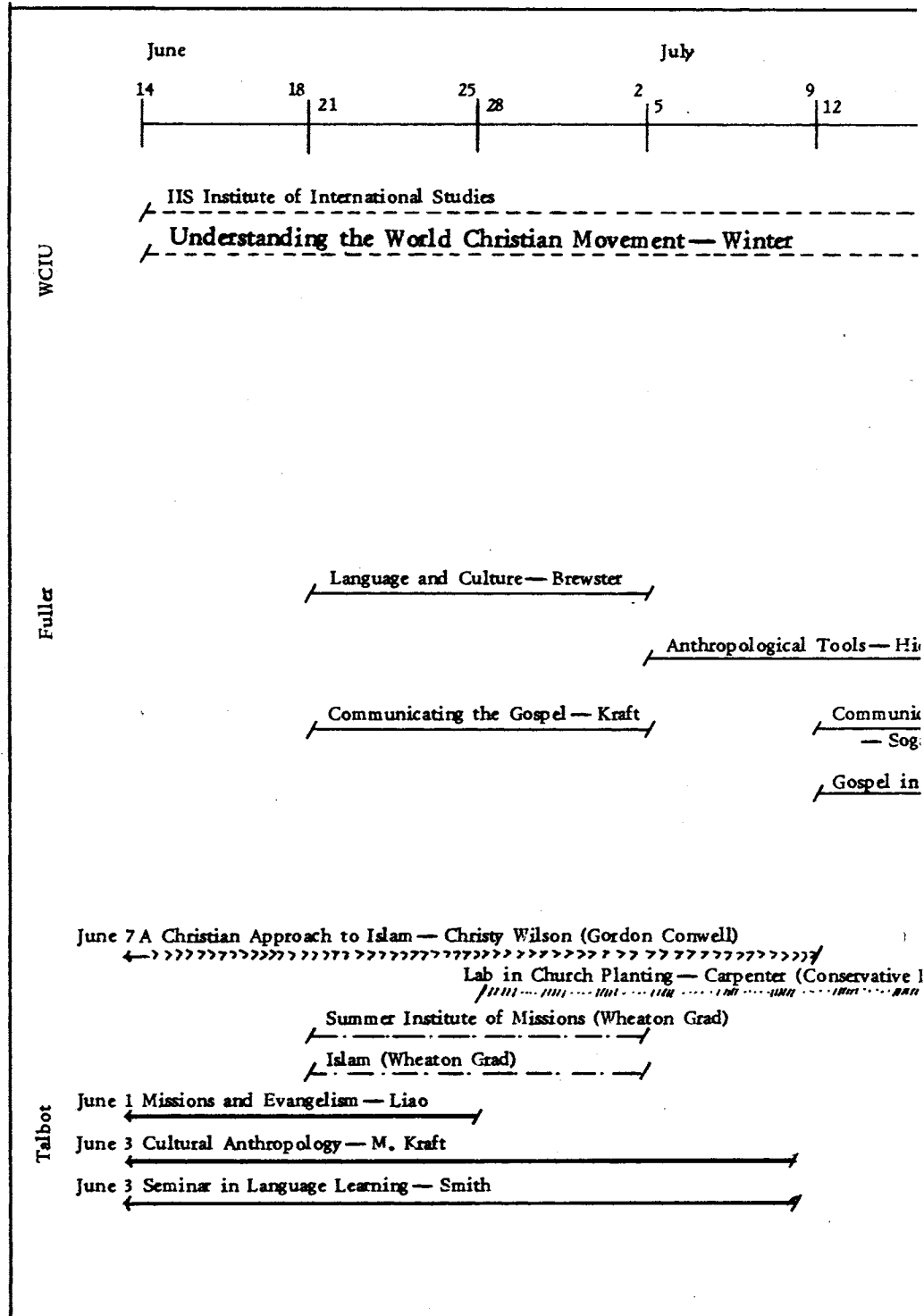
Act soon! Contact the IIS office today if you want to get in on this tremendous opportunity to develop your world vision, and solidify your World Christian commitment! Call (213) 797-4605, or return coupon on back of this issue of Mission Frontiers.

With the Schools

Up-to-a-\$1,000,000 Campus Plan is being considered in several schools. Students praying together on several campuses are seriously proposing to set in motion the forces that will produce up to \$1,000,000 per year of new money for frontier missions.

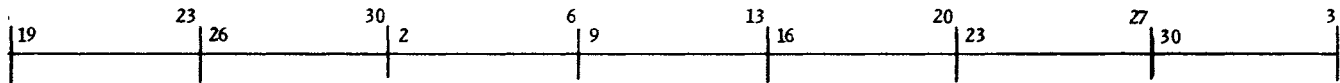
Here's how it's done: Individual students pray specifically for their own home churches to become involved in the Frontier Fellowship daily devotional discipline. Since the loose change from 50 people in a local church amounts to \$100 per person per year, \$5,000 per year results from that size of a group.

Some churches are larger, some smaller, but 200 churches, averaging 50 participants enlisted in this kind of Evangelical March of Coins, will produce \$1,000,000 per year. (It will also blow the minds of thousands and thousands of people. Very few people today look out across the world with the kind of faith and hope which is engendered by this innocent little Daily Prayer Guide.) Circle item on back cover if you are a student and would like a copy of the Campus Plan. Ask for a sample of the Prayer Guide as well.



Schools • Schools • Schools

August



IIS Institute of International Studies
 Understanding the World Christian Movement— Winter

- Applied Linguistics— Purnell
- Chinese World Development— Yu
- Understanding Non-Western Arts— Totten
- Literacy 1 & 2— Watkins
- Introduction to Islam— Special Topics in Muslim Studies— McCurry
- Theories and Methods of TESOL— Dorr
- Orientation to Ministry Among Muslims— McCurry

Fundamentals of Church Growth
 — Wagner

Medical Mission and Evangelism
 — Windsor

Strategy of Mission

Theology of Mission— Glasser

— Covell

Third World Perspective on Mission
 — Pierson

Pauline Theology and the Mission
 Church— Gilliland

Introduction to Christian
 Mission— Johnston
 (to Sept. 18)

Church Planting in the Inner City— Kee (Conservative Baptist)

KEY AND COSTS

- WCIU (\$70/sem unit)
- _____ Fuller Theological Seminary (\$270/4u or \$67.50/qt unit)
- _____ Talbot Seminary (\$58/sem unit)
- Denver Conservative Baptist (\$65/qt unit or \$138)
- ~~~~~ Gordon Conwell Seminary (\$375/3 sem hours)
- o-o-o-o-o Trinity (\$100/qt hr)
- Wheaton Grad School (\$215 course, \$79 audit)



With the Agencies

WITH THE AGENCIES

Mission Agencies (and others) have been somewhat confused over the past few years at the proliferation of missiological terms, often for the same or similar concepts. Recently the Frontier Peoples Committee of the Interdenominational Foreign Mission Association in its first meeting suggested that the following phrases be considered synonymous: Hidden Peoples, Frontier Peoples, Unreached Peoples. The Lausanne Committee representatives agreed, and it is hoped that soon there will be a broad consensus on this question. The main point is whether or not there is "an indigenous community of believers able to evangelize their own people."

A massive campaign is needed in order to reach the world's unreached people groups. The "Adopt A Hidden People" plan that has been on the back burner for over two years can only go forward if mission agencies take the initiative specifically to "select" an unreached people group which a church may then adopt for prayer, support and the supplying of personnel for outreach to that group. It would be heart-breaking for some groups to be selected by agencies and not adopted by churches. It would be equally heart-breaking to the churches if they were to adopt groups no mission agency had as yet selected. If you would like to join in the discussion write for a preliminary paper, which is now in its sixth revision, involving a number of different people. One of the key questions is

whether or not the word "adopt" will seem condescending to a group of people within whose midst there is not yet a viable national church.

Roman Catholic Orders and Protestant Mission Societies:

Should the IRS treat them the same way? For some years this question has been boiling and the SIM has gone to the trouble to make the case with the IRS that their missionary personnel should be treated the same way by the IRS as are the members of a Catholic order. Interestingly enough, a key fact is that most mission agencies pay all their people on the same level, whether they are doctors, teachers, or evangelists (the only differences being due to varying costs of living). The International Foreign Mission Association has indicated to its member organizations how they may declare themselves to the IRS as a Protestant religious missionary order. This will provide significant tax advantages, for example in the sense that all fully commissioned mission agency personnel will be dealt with by the IRS in the same category as ordained ministers.

The Role of North Americans in the Future of the Missionary

Enterprise is the theme of a May 4-7 working consultation at the Overseas Ministries Study Center in Ventnor, New Jersey. Those participating in the program represent a very wide spectrum of church and mission leaders, ranging from National Council denominations to the Southern Baptists. We will report more on this next issue.

The fact that there seems to be a change from the massive pessimism and paralysis typical of mainline denominational circles concerning overseas opportunities makes a conference like this very interesting.

"The New Frontiers, from Edinburgh 1980 to Wheaton 1983" is a technical paper by Ralph D. Winter evaluating the past and predicting the future in relation to the groundswell of new interest in frontiers. He traces "Paradigm A" and "Paradigm B" in relation to the character of major world congresses of Christian leaders. (Circle the item on the back page if you would like a copy.)

EXECUTIVES URGED TO LEAD PRAYER MOVEMENT. (MNS) Speaking at the Annual Convention of the Evangelical Foreign Missions Association (EFMA) in Arlington Heights, IL, March 1-3, David Bryant of InterVarsity Missions and author of *In the Gap*, called on mission executives to take the lead in spawning a movement of prayer for missions. Bryant proposed activities to "move us and the church at large close to an awakening for a new mission thrust."

"Such prayer pioneers should be summoned first of all from within our own ranks of missionary personnel," Bryant said. A warm response greeted this emphasis by Bryant, a missions specialist.

A new missions thrust was on the mind of EFMA's executive director, Wade T. Coggins as he

Agencies • Agencies • Agencies

called for a new missionary thrust by the church worldwide.

Coggins noted the significant role of emerging missions which have developed in Asia and Latin America. The increasing involvement of emerging missions will be a notable factor in the missions thrust of the coming decade, Coggins said. He also noted the rapid growth of emerging missions which now recruit, train and support more than 15,000 missionaries.

In speaking of the personnel needed for a new missionary thrust, William Goheen called on executives to "communicate to the students your commitment and desire to live holy, pure, obedient lives, to seek justice, love kindness, and walk humbly with your God." Goheen is coordinator of InterVarsity Christian Fellowship's Student Training in Missions Program.

Warren Webster, general director of the Conservative Baptist Foreign Mission Society, was re-elected president of EFMA. Other officers are David Rambo, Christian and Missionary Alliance- Vice President; Hal Guffey, International Students Inc.- secretary; and Virgil Ingraham, Brethren Church, Ashland Ohio- treasurer.

It was announced that the next annual convention of the EFMA will be March 8-10, 1983 at Orlando, FL.

KOREAN CHURCHES CHARGE FORWARD INTO MISSIONS. Union missionary conferences are establishing city-wide missionary organizations this year in eleven

major cities of South Korea. Eight conferences were conducted in April, three in Seoul, led by the Korean Branch of International Missionary Advance (IMA). Five will follow this fall. The IMA believes that Korea can eventually commission 100,000 cross-cultural missionaries, even if only two missionaries are sent from each of 50,000 dynamic churches. The Korean IMA Student Coordinating Office already lists 20,000 Korean missionary volunteers.

The World Christian Encyclopedia, the result of over a decade's labor of love by an evangelical Anglican missionary, is one of the most astounding examples of missiological energy. Has anyone ever written a book on the Christian Movement worldwide that has claimed two full pages of TIME magazine? (See May 3 issue.) Due to our large circulation, we have been given a special price break which we are glad to pass on to our readers— \$59.95 postpaid (+ 6% in California.) Over 1,000 pages (each LIFE- magazine-sized page containing the equivalent of four book pages, means this is really a very inexpensive book, even when the retail price goes up to \$95.00 July 31. It is the equivalent of sixteen 250-page books, for which you could readily pay \$10 each these days. (Circle item on back page.)

With the Missiologists. The annual meetings of the Association of Professors of Missions and the American Society of Missiology take place at the Garrett Seminary in

Evanston, Illinois. The theme of the APM meeting, which runs from Thursday, 8 pm through Friday, 3 pm, is "The Bible and Missions: Interdisciplinary Implications." The theme of the ASM meeting (Friday, 5 pm through Sunday, 12 noon) is "Emerging Agendas in World Missions." In the dozen or more topics of addresses and workshops, there is not the slightest discernible reference to the new frontiers. But we can hope that they come up somewhere.

The supply of 5,000 copies in the first edition of PERSPECTIVES ON THE WORLD CHRISTIAN MOVEMENT is getting low. This is not because students, pastors and lay people are buying them — although that is happening. This is because missions professors and missiologists are establishing the book as a required text in their classes. Seventy different missiologists participated in the materials for this book. Scholars in the field of Biblical studies, historical studies, cultural studies and strategic studies contributed to sections in those categories. Professor Johannes Verkuyl writes from Holland, "It is a most remarkable collection of documents . . . I have never seen such a fine collection which one can only find scattered in many books and libraries. I will surely recommend it to my colleagues here in the Netherlands and in Europe. I hope it may stimulate prayers and plans for new strategies in a new age without departing from the base of world missions in the Old and New Testaments."



With the Churches

BE A FRONTIER MISSION CONGREGATION

Because of the great interest today in Frontier Missions (which means missionary outreach directed toward one of the world's 16,750 people groups where no indigenous church movement yet exists), many congregations have asked: "How can we create a Frontier Mission emphasis in our church?"

We have decided to establish a clear-cut goal to shoot for, so that your congregation can become a "Frontier Mission Congregation." Five easy exciting steps:

1. Establish a Frontier Mission Fund. Ask your church's treasurer or mission treasurer to establish a special Frontier Mission fund to which money can be designated, and from which funds are disbursed only for specific Frontier Missionary outreach and projects. These projects may in part already be in your present mission budget.
2. Begin a Frontier Fellowship. Over 150 congregations across the nation have already started one of these groups. Those who choose to join will commit themselves to pray each day for the establishment of a church among each of the world's remaining people groups without any indigenous Christian witness. To assist their daily prayer, they also read about the groups—and the missionary outreach to them—in the Frontier Fellowship Daily Prayer Guide,

The Frontier Fellowship devotional discipline reminds them to pray and read by inviting them to set aside their loose change at the end of each day. Each month these coins are collected and provide basic funding for the congregation's Frontier Mission Fund.

3. Provide opportunities for further study and training. Provide essential books on Frontier Missions in your church's library. (Write for a list of current books from the Frontier Mission Book Service at the U.S. Center.) Feature the Center's new 12-week Sunday School elective course on the world Christian movement (available later this year). Set up a small class that would go through the Center's full college course on the World Christian Movement. (Write IIS Extension, 1539 Howard Street, Pasadena, CA 91104.) Provide scholarship funds for church members to attend the Pasadena World Christian Movement course (an intensive five-week experience in mission perspective).

4. Adopt a Frontier People group for long-term congregational emphasis. Contact your denominational or interdenominational mission headquarters for information on several projects they are launching (or proposing) in order to penetrate a Frontier People Group for the first time. Make this group a special people-to-people concern for your own congregation with focused prayer and study to see them reached

with the gospel of Christ, and a church established. It may be that God would use this kind of emphasis to lead the church's own young people in a cross-cultural ministry to reach this group. (Note: Any giving should go through a mission agency that has chosen to reach that group.)

5. Share your frontier vision with individuals and churches outside your congregation. After your church begins to experience the excitement and blessing that comes from an effective program of outreach beyond the local community, you will naturally want to share the insights you have gained with others. The Frontier Fellowship National Coordinating Office (Box 9, Pasadena, CA 91104) is developing a packet which you can use to plan a "sharing workshop" to share your church's ministry with other churches and organizations.

Each month, on this page in Mission Frontiers we will feature ideas from other churches, and the latest developments in the Frontier Missions movement relating to local congregations in order to help your congregation play its vital role in establishing "A CHURCH FOR EVERY PEOPLE (GROUP) BY THE YEAR 2000!" We need to hear what your church is doing in order to share the ideas with others. Let us hear from you.

Write: Church Relations Office, USCWM, 1605 Elizabeth street, Pasadena, CA 91104.

Churches • Churches • Churches

The First Korean World Mission Congress will be held at the William Carey International University in Pasadena, California May 17-30, 1982. Expected to attend are 300 delegates from Korean churches on five continents. The objectives of the Congress are: 1) to unite Koreans worldwide for the Great Commission of Christ, and 2) to establish a Korean World Mission Coordinating Center.

The Congress will observe the centennial year of diplomatic relations between Korea and the United States. Speakers will

A Smash Hit at APMC. This year's national conference of the Association of Church Missions Committees has got to be the most outstanding program in their considerable history of highly organized conferences. This conference is like an Urbana for adults. Don't let your church be damaged by missing out. What a loss for two or three key people in your church if you have not yet laid plans to go. Now is the time to write for the big beautiful folder of this July 15-18 conference at Southern Illinois University. You'll see a staggering array of outstanding speakers, workshop leaders, etc. Nothing remotely comparable to it in 1982. Write to APMC, 1621 So. Myrtle Avenue, Monrovia, CA 91016.

include Dr. Yong Chik Han of the famed Yong Nak Presbyterian Church in Seoul, N. J. Gnaniah

of India, Dr. Ralph Winter, Don McCurry, Don Brown, and Jim Ziervogel, from Pasadena.

NOT JUST STUDENTS,
NOW CHURCH CONGREGATIONS
CAN USE THE 864 PAGE BOOK
"PERSPECTIVES" WE HAVE BRAGGED
ABOUT. (Turn back to p. 15.)

WHY? HOW? NOW AVAILABLE IS A...

Spectacular new 150-page Study Guide for the course Understanding the World Christian Movement. Note the exciting topics.

1. The Living God is a Missionary God
2. The Obligations and the Opportunity
3. The Kingdom Strikes Back
4. A Man and a Message for All Peoples
5. The Expansion of the World Christian Movement
6. Eras of Mission History
7. Pioneers of the Movement
8. The Task Remaining
9. Strategy for World Evangelization
10. That Everyone May Hear

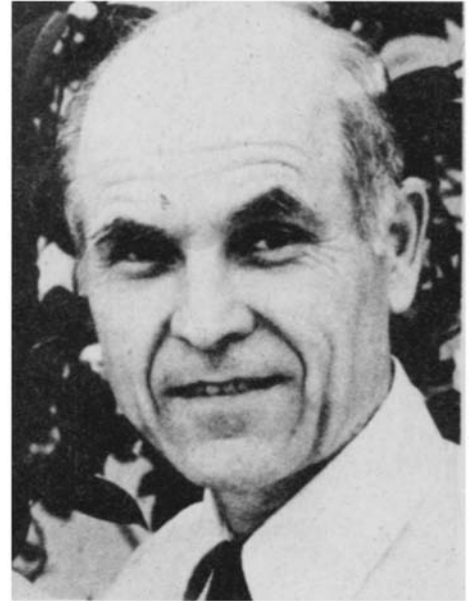
11. A World of Difference
12. How Shall They Hear?
13. Building Bridges of Love
14. The Church in Culture
15. The Spontaneous Multiplication of Churches
16. Pioneer Church Planting
17. The Hidden Peoples and the Hungry Half
18. Unreached Doesn't Mean Unreachable
19. World Christian Teamwork
20. World Christian Discipleship

Special note: These topics and this Study Guide lead you by the hand through all 87 chapters of that luxurious 864-page book, Perspectives on the World Christian Movement. (Circle item on back page.)

Churches • Churches • Churches



An
Interview
Between
Dr. Paul Cedar
And
Dr. Ralph D. Winter



PAUL: As you know, I live a few blocks away from this magnificent Center God has established here and I often wonder how you are getting along. As the senior pastor of a church nearby, I have come to love you deeply and to have a great appreciation for what God is doing in and through you! I've tried to keep up with all that's going on, but I've decided to come and ask a few questions face to face. I appreciate your giving your time to me.

RALPH: Paul, I'm astonished and pleased that you would take time away from the heavy burdens and pressures of a huge congregation. What can I tell you?

PAUL: We've recently begun a Frontier Fellowship in our church and are very excited about it. I heard someone say that your Frontier Fellowship movement already lists \$2.8 million of adopted goals.

RALPH: Here's the latest list! It's over \$3 million now (see p. 20) You can see that our primary attention is not focused on money coming to us but how much new money will be generated for a number of agencies specifically for frontier mission outreach. Each of the organizations you see on this list has set some kind of goal. Where they have not set a goal, we have, for our own purposes of prayer and planning, put down a goal for them — what we have tentatively felt they could do. Now in all these cases, if they give us the first \$15 out of the first \$100 that comes in from any one person, we will receive the amount in the column on the right.

PAUL: I guess our congregation is listed under "individual congregations"

RALPH: Right! I think you told me you had 300 people that wanted to sign up. That's a large group — even for a church of 3000.

PAUL: We're very grateful for the wonderful initial response. What have you found to be a realistic goal for a church?

Churches • Churches • Churches

RALPH: We'd like to see a minimum of 50 people in any congregation, but we assume that, depending on the vision and commitment of the group or the church, it will run one out of ten, or one out of twenty.

PAUL: Let me see if I get this straight. Our 300 people, generating a minimum of \$100 per year per person will mean that our mission budget will have a special influx of at least \$30,000?

RALPH: That's right! Year after year. Even a smaller church with only 50 Frontier Fellowship members will generate 50 x \$100, or \$5,000 per year.

PAUL: Now, we've decided to give \$15 from the first \$100 that comes in from any person to the U.S. Center for World Mission. That's all you've suggested.

RALPH: That's correct. We've not changed our original vision of paying for this property without any one person giving more than \$15. And we insist on even this gift being optional. We're glad that practically every group participating so far has been glad to do this. An easy way to do the accounting is for a church to give us 15% of the money that comes in from all the people who have not yet given \$100. Then a separate fund is maintained that grows larger and larger, consisting of the coin offerings of those who have already given \$100. Except for the money sent to us, all the rest goes to wherever your church wants to designate it. In no case is the U.S. Center the recipient of those funds. We can't ask for the first \$15 and then ask for all the rest as well.

PAUL: But Ralph, that is very gracious of you, and I appreciate the reasons why you are doing it this way. I can even believe (and we can all work together for this) that the movement will grow so rapidly and will be big enough to pay your \$6 million payment next year. But our offering so far has only been a little over \$4,000 in the weeks we have been receiving these coins, and 15% of that is only \$600. And how are you going to make these quarterly payments between now and September of next year?

RALPH: Paul, I don't know the answer. I do know that when one of these crises looms—like our June 1st deadline, when we have to pay another \$175,000—that in all previous cases we have only gotten through by the skin of our teeth. Our whole project, this unique financial approach, is apparently so complicated that lots of people are confused.

PAUL: I have been personally confused at times. Where does money come from in the meantime?

RALPH: It's profoundly moving. Although we've told people that we do not intend to keep permanently for ourselves amounts larger than \$15, many wonderful, generous churches and individuals have indeed risen to the occasion and have given far more. I can't believe it! One small Baptist church in Portland has given us over \$100,000. A Presbyterian church in Santa Ana, California has given us over \$70,000. Another in Santa Barbara over \$50,000. A church in Chattanooga sent us \$25,000. And on and on. But individuals, lay people—especially missionaries—have been particularly lavish. A farmer in Winnepeg sent \$16,000. A missionary in Guatemala sent \$10,000. Many missionaries, even college students, have sent \$1,000 or more. One couple's repeated gifts total over \$50,000. Well, I'm not really an expert in the giving patterns of people. But I do know that there is no correlation between the wealth of the individual and the amount of the gift.

Churches • Churches • Churches

patterns of people. But I do know that there is no correlation between the wealth of the individual and the amount of the gift.

PAUL: That's truly amazing! I know it has strengthened your faith. But I guess I hadn't heard about this business of not keeping these larger gifts. What do you intend to do with them? You've already spent them on property payments!

RALPH: We intend to return (to churches) or reassign (gifts from individuals) all such gifts, once enough of the \$15 gifts have come in. In no case has anyone demanded a formal promise that we do this, and I don't believe that we would do right to bind ourselves legally. But this has been our policy and our good pleasure.

PAUL: As I have told you before, I believe deeply in what you are doing. And, although your plan is unorthodox, I believe it is from God. I support you and the plan. I assure you of my love, prayers and support, and I thank God for the privilege of sharing your vision with our people. I believe that God has begun a new and significant work at the U.S. Center which has potential greater than most of us can imagine as you continue to labor to the glory of God!

FRONTIER FELLOWSHIP SCOREBOARD

Groups Officially Participating in the Frontier Fellowship	Goals	Projected \$ at \$100 per year per person	Projected \$ to USCWM at \$15
Mission Agencies			
North Africa Mission	2,000	200,000	30,000
Intl. Missionary Advance	1,000	100,000	15,000
Gospel Recordings	1,000	100,000	15,000
Africa Inland Mission	3,000	300,000	45,000
Christian Missionary Fellowship	1,000	100,000	15,000
SEND, International	2,000	200,000	30,000
RBMU International	1,000	100,000	15,000
Bible Translations on Tape	1,000	100,000	15,000
Denominational Groups:			
United Presbyterian FF	2,000	200,000	30,000
Episcopal Church Mis. Commun.	200	20,000	3,000
Individual Congregations [154]	7,700	770,000	115,500
Other Participating Groups	<u>12,000</u>	<u>1,200,000</u>	<u>180,000</u>
	33,900	3,390,000	513,000



With the Frontier Fellowship

Please, please, please don't let our extravagant mailing go to waste. In April we mailed over 25,000 copies of the May Daily Prayer Guide. Last time we reported that it cost \$6,528.78. I know, I know it is a terrible nuisance to try to develop a new habit and put this Daily Prayer Guide to use. It would be easier to simply read it straight through and be done with it. But the fascinating challenge is to allow the heart vision of God to invade your heart every single day. Don't miss out. Dig it out. It's the booklet that refers to Chariots of Fire and Eric Liddell. As of this writing (April 30) we have orders for over 5,000 additional booklets. A lot of people are well impressed and benefitting from it already. Here's a chance both to get a vision and to give a vision away by encouraging others in your church to use the same Daily Prayer Guide. You can't believe what an innocent little pile of these guides at the front entrance of your church will do for your congregation.

One advantage Southern California pastors and lay and student mission leaders have enjoyed over the past five years has been the presence of the U. S. Center for World Mission staff in their area.

Not only is it easier for them to get the latest materials and supplies for spreading frontier vision, but the Center staff is available for counsel and help in planning and presenting special programs designed to mobilize Christians for the cause of taking the good news of new life in

Jesus Christ to the world's 2.4 billion people with no indigenous gospel witness.

With the establishment of regional centers, this same quality of material, programs and personalized help is now available in several key areas across the country.

The most comprehensive of these centers is located in Mt. Joy (near Lancaster), PA. Rev. Nate Showalter, an experienced pastor and denominational and missions executive, directs the activity of three full-time staff members in this Center. Located close to the major mission centers of Philadelphia and New York City, it serves the middle Atlantic states with materials and suggestions for mobilizing and educating local churches and student groups in missions. Mr. Fran Patt and Mr. and Mrs.

Dave Delozier are available to meet with groups throughout the entire area. You may contact this regional center at Box 83, Mt. Joy, PA 17552.

Regional centers are also being developed in the western Washington area by Mr. and Mrs. Kevin Buck (1247 Toledo Street, Bellingham, WA 98226) and in eastern Washington by Mr. and Mrs. Lonnie Toler (412 N. Dale Road, Moses Lake, WA 98837).

Other areas where regional centers are beginning to move into action are New Hampshire (New England), Ohio, Tennessee (Mid-South), Oregon, Texas, Illinois (Great Lakes), Western Pennsylvania, Georgia (Southeast), and Mississippi (Deep South). If you are interested in contacting one of these centers, or if you would



Write for special Frontier Fellowship key-coin holder--only 25¢ each!

Fellowship

like to be involved in serving or even starting one, please contact Mr. Brad Cronbaugh, Regional Center Coordinator, USCWM, Box 9, Pasadena, CA 91104.

CALLING UNITED METHODISTS FOR FRONTIER MISSIONS! There is a growing interest among many people in forming a United Methodist Frontier Fellowship, to increase frontier mission vision, increase understanding of the task of world evangelization, and raise up new prayer support and funds for the frontiers.

If you have any interest in helping with such a project, contact Robby Butler at 213/798-5663, or write him at: United Methodist Frontier Fellowship, 1605 Elizabeth Street, Pasadena, CA 91104.



Mary Fran Redding

GONE TO BE WITH THE LORD

On May 5th another beloved staff member at the U. S. Center for World Mission went to be with the Lord. Since the 23rd of

Cheaper than Drugs. For only \$.25 you can blow your mind on J. Edwin Orr's little pamphlet, "The Role of Prayer in Spiritual Awakening." It is a printed transcript of the sound track of his filmed address at the Dallas Prayer Congress. Really, truly you will miss something very important if you don't get this. We cannot possibly reach out across the world to do what God wants to do today if we do not allow Him to revive us again with a mighty spiritual outpouring. (Circle item on back cover.)

The Kingdom Strikes Back. Last issue we mentioned the six tapes at 40% discount (\$14.95 instead of \$24.95). We also explained that there is a one-hour single tape called "Missions—the Biblical Imperative" which to

January of this year when she suffered an aneurysm of the brain, Mary Frances Redding has been mainly unconscious, in spite of surgeries.

One of our earliest and most trusted staff, Mary Fran was in charge of conferences and church relations. She single-handedly managed for several years in a row the Southern California Mission Festival and its subsequent Christian Leaders Institute of International Studies. She is remembered for her optimism, her perseverance and hard work, and her wholehearted determination to follow the Lord. We will miss her greatly but rejoice with her on this, her graduation day.

Special Items

some extent covers the same ground. We now have available a 20-page booklet under the same title as the tapes. In it, Dr. Ralph D. Winter, after 15 years of study, reflection, and teaching, presents an exciting new perspective on the 2,000 years following the appearance of Jesus Christ among men. This detailed unfolding of the drama of the expanding Christian movement is a very unconventional interpretation done by missionary anthropologist/historian. (Circle item on back page.)

MINISTRY TOOL FOR IRANIAN OUTREACH OFFERED. Sharing the Gospel with Iranians—A Handbook has been produced by the Zwemer Institute to help American Christians witness to the thousands of Iranians in our midst. Because any ministry to Muslims requires a great deal of sensitivity, the handbook dedicates a number of pages to the cultural and religious background of Iranians. It also gives helpful hints on how to build cultural bridges useful in sharing the Gospel, and makes suggestions for discipling new Iranian believers. Of specific interest is an extended case study. Postpaid \$5.25 (add \$.50 tax for residents of California) from Samuel Zwemer Institute, P.O. Box 365, Altadena, CA 91101.

CANADIAN EVANGELISM RESEARCH PROJECT UNDERWAY. Mississauga, Canada (WEIS). An ambitious attempt is underway to discover and describe the "unreached people" groups in the Canadian

population. World Vision of Canada is sponsoring the project in preparation for the June 1983 Canadian Consultation on Evangelism. That consultation is slated for Waterloo, Canada, and will be sponsored by the Evangelical Fellowship of Canada.

The publication to emerge from this study will be a listing of the "people groups," as well as several case histories of successful cross-cultural penetration in different regions of Canada.

SUDANESE RESPOND TO EVANGELISTIC BROADCAST. Manila, Philippines (WEIS). The Sudanese people of Indonesia are responding to an evangelistic short-wave radio broadcast over the Far East Broadcasting Company's station based in Manila. Since the broadcast originated in December 1981, the mail response indicates that the programs are being heard "loud and clear."

The little-known Sudanese, who number about 23 million, comprise the seventh largest ethnic group among the world's Muslims. The daily half-hour broadcasts are prepared by the Sudanese Missionary Fellowship, with headquarters in Lynchburg, VA.

7,000 DELEGATES MADE URBANA '81 PLEDGES. At Urbana '81, InterVarsity Christian Fellowship's 13th Student Mission Convention, held December 27-31, 1981, 7,078 delegates (mostly students) signed the World Evangelism Decision Card, distributed to over 14,000 in attendance.

According to John Kyle, program director, 1,727 delegates indicated they believed God was leading them to serve overseas. At the same time, 4,723 made decisions to increase their awareness and

involvement in world missions. Another 678 delegates made commitments to support world missions with money earned from business or professional skills.

FELLOWSHIP OF ISA REACHES TO MUSLIMS IN U.S. The Fellowship of Isa (Jesus) came into being to reach out with the message of salvation in Jesus Christ to the nearly four million Muslims living in the U.S.

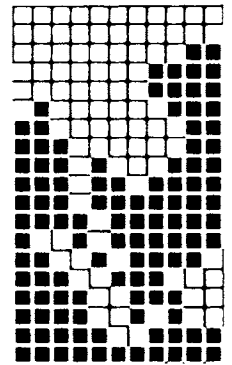
The Fellowship helps equip volunteers to develop strategies for reaching Muslims. Volunteers consult phone books looking for Muslim names. Tracts are sent

to those people, and follow-up teams call on the Muslims to whom the tracts were sent. The Fellowship of Isa is seeking people who are willing to join in this important dimension of cross-cultural evangelism to one of the main hidden people blocs.

If you are interested in joining with the Fellowship of Isa to help reach Muslims, contact the Fellowship of Isa at the office nearest you: 16 Armory Street, Greenfield, MA 01301 (413/774-5986), or P.O. Box 1206, Minneapolis, MN 55440 (612/929-2828), or 1605 Elizabeth Street, Pasadena, CA (213/797-1111).

CROSSROADS '82

Saturday, June 19, 1982 at 7:00 p.m.
First Church of the Nazarene
3700 Sierra Madre Boulevard
Pasadena, CA



You will want to be a part of this tremendous evening of missions focus and understanding: June 19, 1982.

FEATURING:

- Elisabeth Elliot, former missionary and author of *Shadow of the Almighty*, will be the featured speaker.
- Rich Buhler, host of KBRT radio's "Talk From the Heart," will be Master of Ceremonies.
- Marajen, from Campus Crusade will bring special music.
- Dr. Ralph D. Winter, General Director of the U.S. Center for World Mission will bring an update report on the Frontier Fellowship.
- The multi-media presentation, "Panorama" will also be screened.

Dr. Edwin Kilbourne, veteran missionary to Asia, will lead a special Great Commissioning Service dedicating over 200 short-term and career missionaries leaving for overseas assignment.

Mission Frontiers Book Service

Frontier Fellowship Prayer Guide. Daily Prayer guide focused on the frontiers of the Gospel. (\$.50 each plus postage; \$.40 for 10 or more plus postage.)

Introductory Frontier Fellowship cassette. A dynamic message for your first monthly Frontier Fellowship meeting. (\$2.00)

Send me a Starter Pak, including my first Frontier Fellowship monthly Prayer Guide, jar label, and other helpful materials. (\$1.00)

"Remember the Hidden People" labels. A pressure-sensitive label for your loose change jar. (1 free; 50 per dozen; \$3.00 per 100)

"Introducing the Frontier Fellowship" brochure. (Free)

"The Plot." An upbeat cartoon-booklet tracing the breakthroughs in world Christian outreach and introducing the Frontier Fellowship cause. (.25 each)

I've already begun saving my loose change and praying for Hidden Peoples! Send me the Frontier Fellowship monthly newsletter to keep up on the nationwide campaign. (Free)

Tell me how to begin a Frontier Fellowship in my church.

"The Kingdom Strikes Back!" Six audio tapes by Dr. Ralph Winter (\$14.95, discount price).

"The Kingdom Strikes Back." Booklet by Dr. Ralph Winter (\$1.50)

"Missions: The Biblical Imperative." One-hour cassette tape (\$2.00)

"The New Frontiers, from Edinburgh '80 to Wheaton '83." By R.D. Winter (\$1.00)

Perspectives on the World Christian Movement. Winter and Hawthorne. (clothbound: \$16.00; paperback: \$13.00 plus postage, \$1.00)

Understanding the World Christian Movement. A study guide to Perspectives (\$5.00)

Rebuilding the Mission Movement. Joe Cumming (\$8.00, limited supply)

The Role of Prayer in Spiritual Awakenings. J. Edwin Orr (.25 each)

The World Christian Encyclopedia. David Barrett (\$59.95, discount price)

WCIU Catalog (\$3.00; \$4.00 to overseas address)

"Hidden Peoples Sunday" planning kit. All you need to plan and present the Hidden Peoples challenge in your church, including sample handout materials, publicity, message suggestions, etc. Use Frontier Fellowship materials to follow up. (\$2.50)

"Hidden Peoples" cassette, a series of 31 reports of Hidden people groups with no existing church or internal Gospel witness. (\$2.00)

Subtotal \$ _____

CA residents add 6% tax \$ _____

Postage (less than \$5.00) \$1.00

Total Enclosed \$ _____

Institute of International Studies brochure.

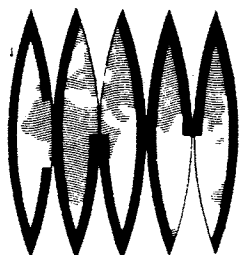
"Up-To-A-Million." Campus Plan brochure.

Regional Center Information

Order will be sent to name on mailing list below unless you note otherwise.

All items must be prepaid.

UNITED STATES



Center
for
World
Mission

1605 E. ELIZABETH ST.
PASADENA, CA 91104
(213) 797-1111

Address Correction Requested

Nonprofit Organization
U.S. Postage
PAID
Pasadena, California
Permit No. 563